

**LOT 18**

**TOTAL SCHEDULE OF AREAS**

Site Area	2,369m <sup>2</sup>
Warehouse Gross	1,060m <sup>2</sup>
LunchRoom Gross	23m <sup>2</sup>
Stairs Gross	26m <sup>2</sup>
Total Warehouse Gross	1109m <sup>2</sup>
Office_Gross	200m <sup>2</sup>
Canopy	248m <sup>2</sup>

**PARKING REQUIREMENTS**

CPD Parking Requirements:

Warehouse	1 per 150m <sup>2</sup>
Office	1 per 40m <sup>2</sup>
Accessible	1 for up to 20 carparks
Cycle Racks	1 per 10 staff

Warehouse 1,060m<sup>2</sup> (7 Required)  
Office 200m<sup>2</sup> (5 Required)

Total Carparks Required 13  
Total Carparks Achieved 13

**SITE COVERAGE**

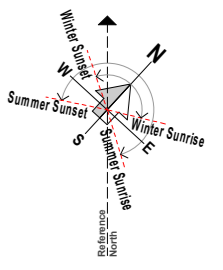
Total Built Area Gross	1,309m <sup>2</sup>
Total Site Coverage Gross	55.3%

**SITE LEGAL DESCRIPTION**

Chalmers Road  
Northgate  
Hamilton 3200

Lots 18  
DP 519482  
600 Arthur Porter Drive, Hamilton

Site Area:	2,369m <sup>2</sup>
Permeable Area:	103m <sup>2</sup> 4.3%
(20% of entire site= 473m <sup>2</sup> )	



SITE PLAN 1:500  
scale 1:500

rev date details

eclipse)architecture

24 GUNDRY STREET,  
NEWTON  
PO BOX 7539,  
AUCKLAND 1141  
p. +64 9 303 4759  
www.eclipsearchitecture.co.nz

job no.	CPL0471.00
cad file	CPL0642.00 Te Rapa Lot 18_Mairite.prt
design	
drawn	
checked	
date	26/07/2019
job title	

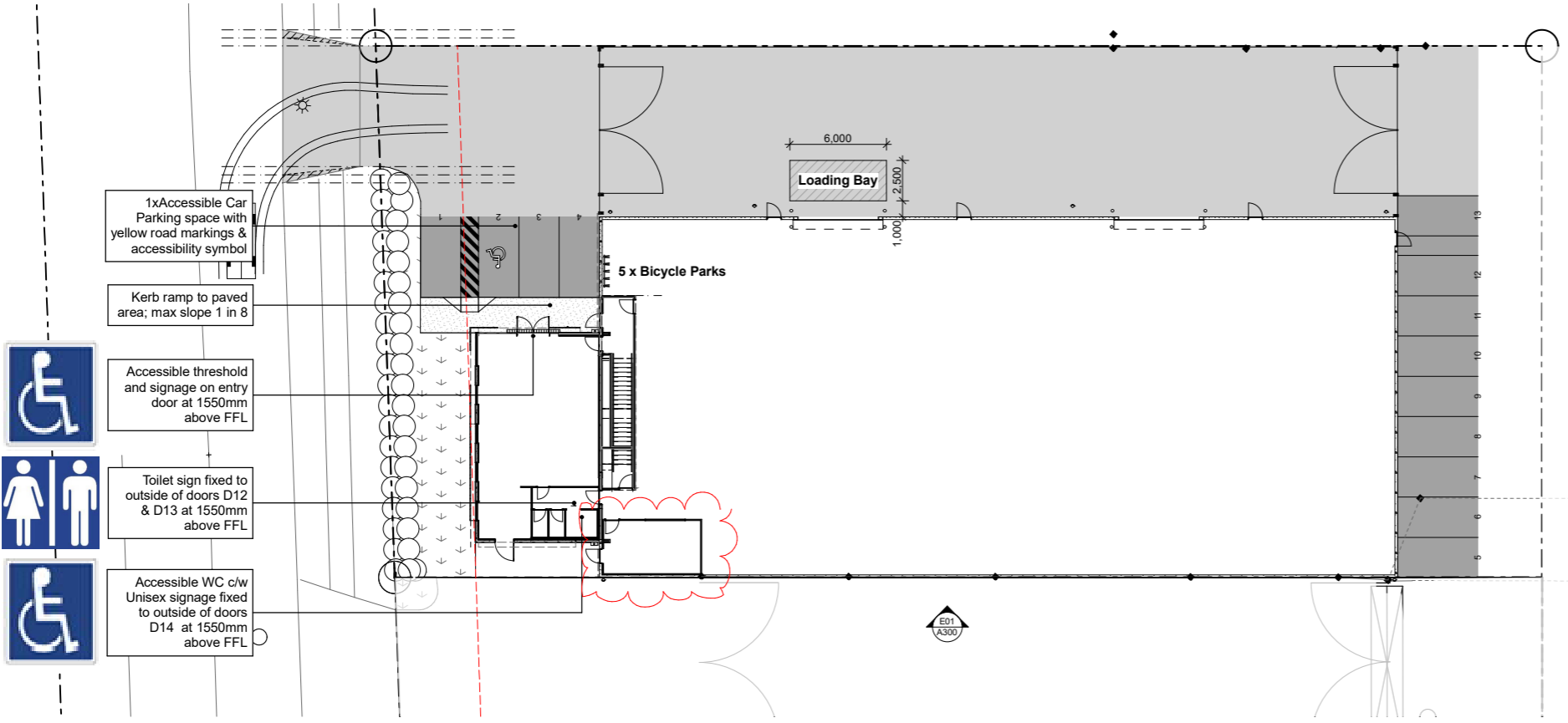
TE RAPA GATEWAY  
WAREHOUSE & OFFICE  
DEVELOPMENT  
LOT 18  
(SPEC BUILDING)  
HAMILTON INDUSTRIAL  
PARK

Proposed Site Plan &  
Accessibility Plan

status  
DETAILED DESIGN

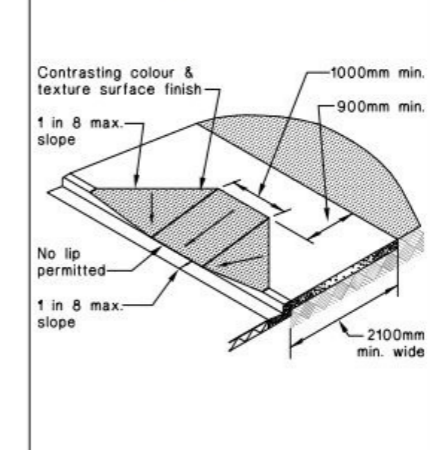
scale  
AS SHOWN @ A1

rev	dwg No
E	A100



ACCESSIBILITY PLAN  
scale 1:200

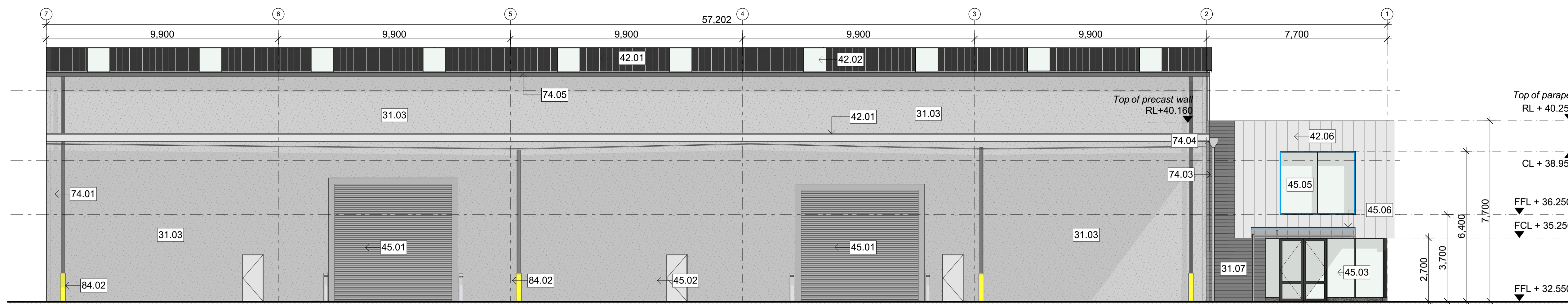
Figure 10: Minimum Dimensions for Kerb Ramps  
Paragraph 3.4.1



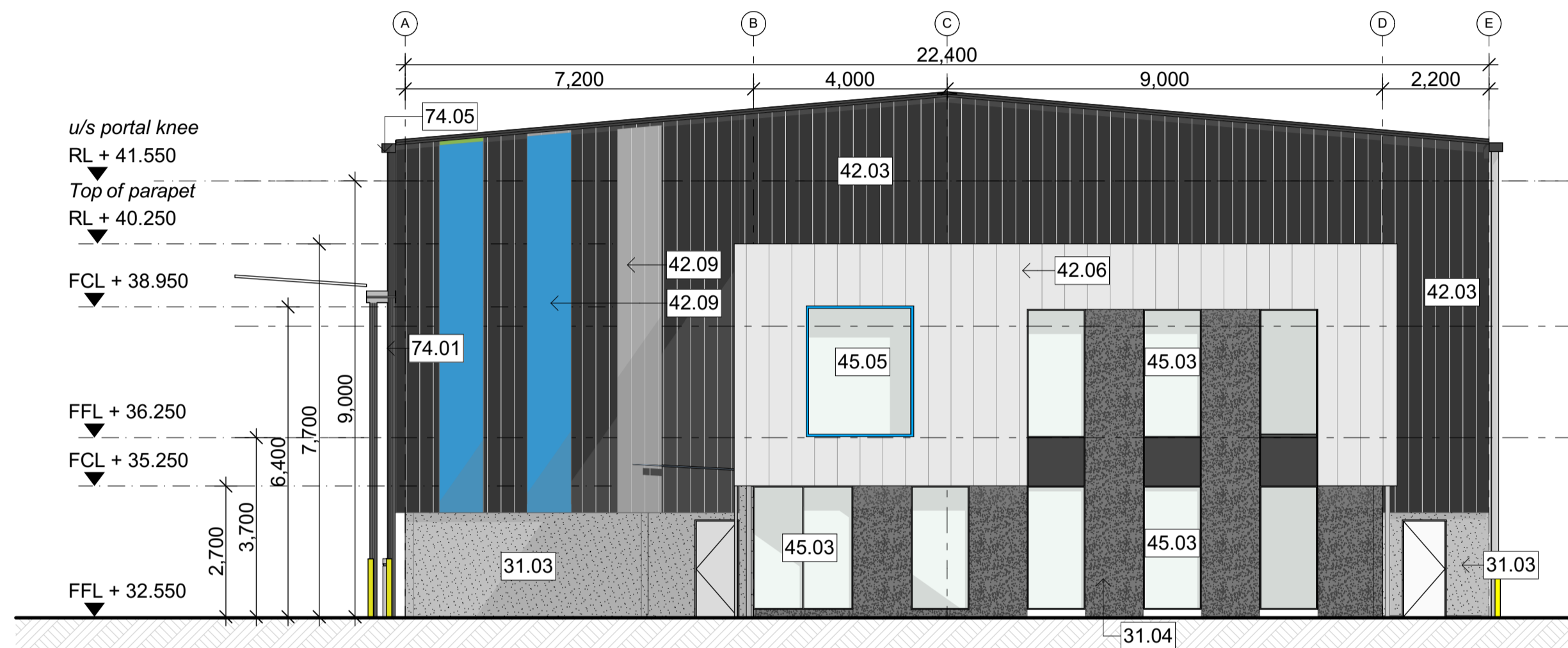
KERB RAMP  
not to scale

NOTE: Refer A200, A201 & A601 for Accessible Door widths and details

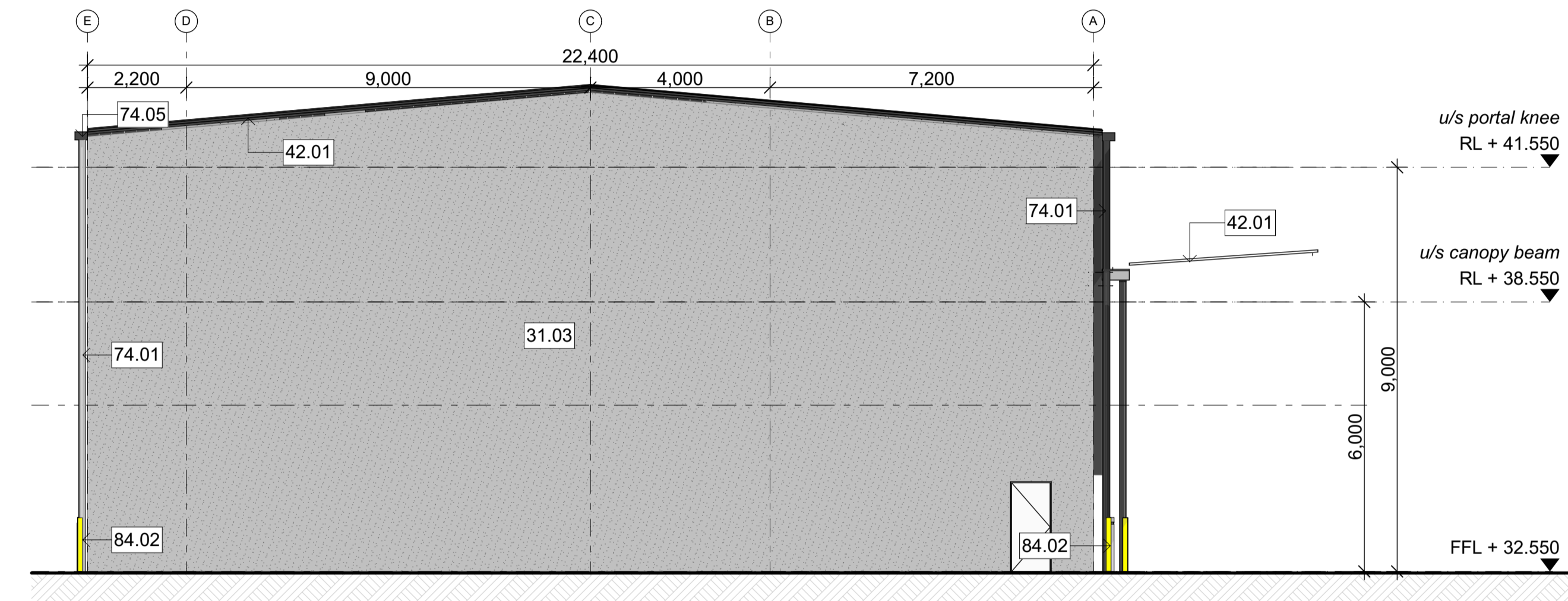




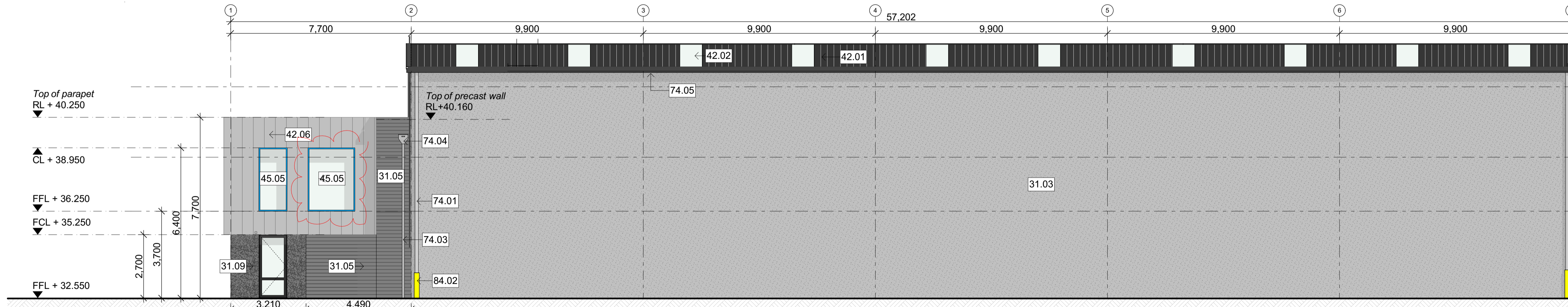
**NORTH ELEVATION**  
scale 1:100



**WEST ELEVATION**  
scale 1:100



**EAST ELEVATION**  
scale 1:100



**SOUTH ELEVATION**  
scale 1:100

<p><b>3 STRUCTURE</b></p> <p><b>31.03 165mm Precast Concrete 240/240/240 FRR Wall Panel (Natural Finish)</b> 165mm thick 240 min Fire rated precast concrete wall panel; Natural finish; Refer Engineer's drawings for details.</p> <p><b>31.04 150mm Precast Concrete Wall Panel (Exposed aggregate Finish)</b> 150mm thick precast concrete wall panel; Exposed aggregate finish; Refer Engineer's drawings for details.</p> <p><b>31.05 150mm Precast Concrete Wall Panel (Concrete bandsawn panels)</b> 150mm thick precast concrete wall panel; Shutter finish (use 150mm wide x 25mm thick oregon pine boards) to exterior face; Refer Engineer's drawings for details.</p> <p><b>31.07 150mm Precast Concrete 60/60/60 FRR Wall Panel (Concrete bandsawn panels)</b> 150mm thick 60 min Fire rated precast concrete wall panel; Shutter finish (use 150mm wide x 25mm thick oregon pine boards) to exterior face; Refer Engineer's drawings for details.</p>	<p><b>31.09 150mm Precast Concrete 90/90/90 FRR Wall Panel (Exposed aggregate Finish)</b> 150mm thick 90 min Fire rated precast concrete wall panel; Exposed aggregate finish; Refer Engineer's drawings for details.</p> <p><b>4 ENCLOSURE</b></p> <p><b>42.01 Warehouse Roof: Profiled Metal Roofing</b> 0.55mm BMT Colorsteel Endura Dimond Roofing DP955 over roof underlay on wire netting on DHS purlins; Colour: Ironsand</p> <p><b>42.02 Warehouse clearlite: Translucent Profiled Roofing</b> Alysnite clearlite roof lights: Topglass GC Hi Line / Topspan; profile ALS955</p> <p><b>42.03 Warehouse Wall: Profiled Metal Cladding on timber strapping on Precast Conc Wall</b> 0.40mm BMT Colorsteel Endura Dimond Cladding LT7 fastened through 20mm cavibat onto H3.1 75x45 LOSP horizontal timber battens @1500crs with type 17 14 gauge x 10TPI x 90mm fasteners (30mm penetration minimum). Structural timber battens to be anchored through DPC to precast walls with M8 Chemset studs and Epcon C65 @ 1000mm spacing along the battens (fixings- specific engineering design); Colour: Ironsand</p>	<p><b>42.06 Office Wall: Profiled Metal Cladding</b> 0.55mm BMT Colorsteel Endura Dimond Heritage Tray cladding over building paper over cavibat battens @ 600 crs max over building paper over timber framing; Colour: Ironsand</p> <p><b>42.09 Warehouse Accent Wall: Profiled Metal Cladding Accent Colour</b> 0.55mm BMT Colorsteel Endura Dimond LT7 Cladding (standard 933 with strip) fastened through 20mm cavibat onto H3.1 75x45 LOSP horizontal timber battens @1500 crs with type17 14gauge x 10TPI x 75mm fasteners. Structural timber battens to be anchored through DPC to precast walls with M8 Chemset studs and Epcon C6 @ 1000mm spacing along the battens (fixings - specific engineering design); Colour: TBA</p> <p><b>45.01 Roller Door</b> New Metabuilt Warehouse roller door; 5m high, 0.75mm powdercoat frame and door finish; Motorised (3 phase) roller shutter doors, Automatic operation, spring balanced, standard guide to jamba &amp; birdproofing to door head, complete with wind lock guides; Colour to match Colorsteel Ironsand</p>	<p><b>45.02 Exterior Doors</b> Solid panel security door, powdercoated aluminium faced timber; Refer Door Hardware Schedule for details; Colour to match Colorsteel Ironsand</p> <p><b>45.03 Shopfront glazing</b> Powdercoated 125mm Front Glazed Firvie Suite aluminium tinted double glazed joinery; Colour to match colorsteel Ironsand</p> <p><b>45.05 1st Floor Office Window Head, Jamb &amp; Sill Flashing with Accent Colours</b> 2mm thick powdercoated aluminium jamb flashing; Colour: TBA</p> <p><b>45.06 Office Entry Canopy</b> Euroglass Canopy Structure with stainless steel gutter and downpipe</p> <p><b>7 SERVICES</b></p> <p><b>74.01 Warehouse DPs: 150 uPVC Downpipes</b> 150 dia. uPVC downpipes with DP protectors; paint finish; Refer A103 for typical DP &amp; protector layouts</p> <p><b>74.03 Office DPs: 100 uPVC Downpipes</b></p>	<p>100 dia. uPVC downpipes with DP protectors; paint finish; Refer A103 for typical DP &amp; protector layouts</p> <p><b>74.04 Rainwater Head</b> 0.75mm BMT Colorsteel Endura RWH Colorsteel Endura to match wall cladding colour</p> <p><b>74.05 Dimond 300 Box External Gutter</b> Colorsteel Endura Dimond 300 Box external gutter with external gutter brackets fixed at 600mm CRS max laid to fall; finish to match gutter</p> <p><b>8 EXTERNAL</b></p> <p><b>84.02 Shrouds</b> 1m high galv steel shroud downpipe protectors to all downpipes in yard and warehouse area</p>
---	---	--	--	---

rev	date	details

eclipse) architecture

24 GUNDRY STREET,  
NEWTON  
PO BOX 7539,  
AUCKLAND 1141  
p. +64 9 303 4759  
www.eclipsearchitecture.co.nz

job no.	CPL0471.00
cad file	CPL0642.00 Te Rapa Lot 18_Mainfile.pln
design	
drawn	
checked	
date	2019/4/2

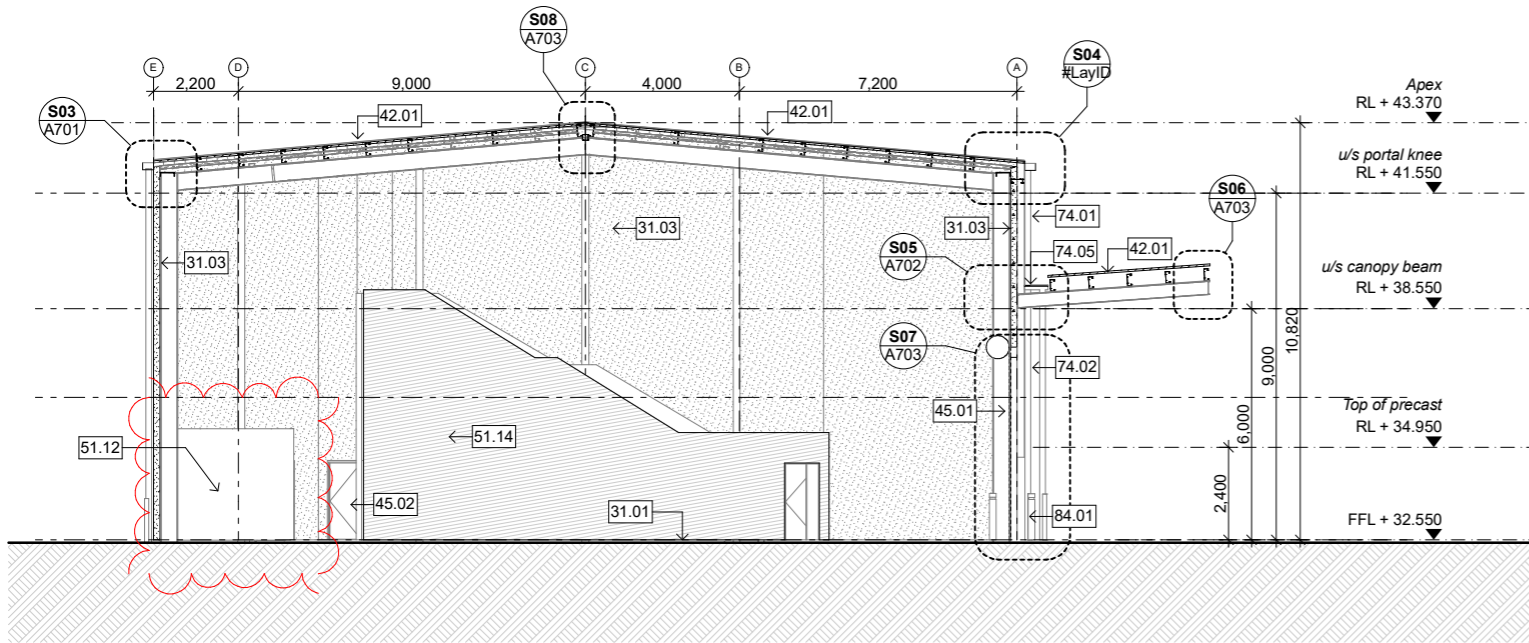
job title  
**TE RAPA GATEWAY  
WAREHOUSE & OFFICE  
DEVELOPMENT  
LOT 18  
(SPEC BUILDING)  
HAMILTON INDUSTRIAL  
PARK**

dwg title  
**Elevations**

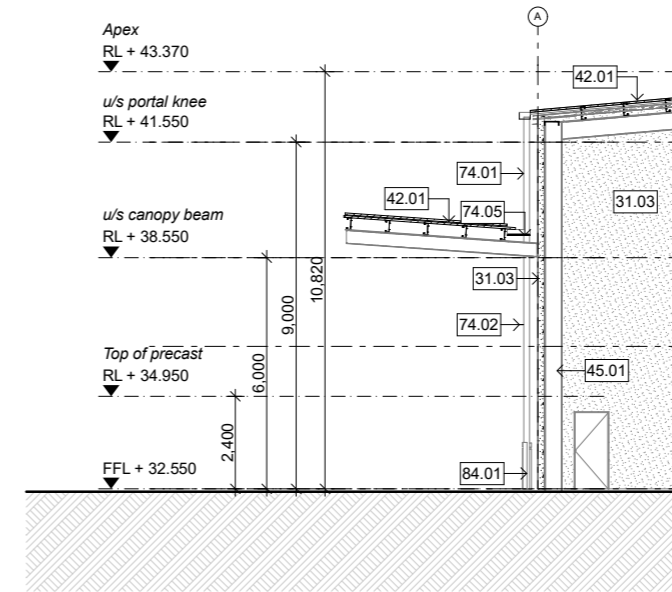
status  
**DETAILED DESIGN**

scale  
**AS SHOWN @ A1**

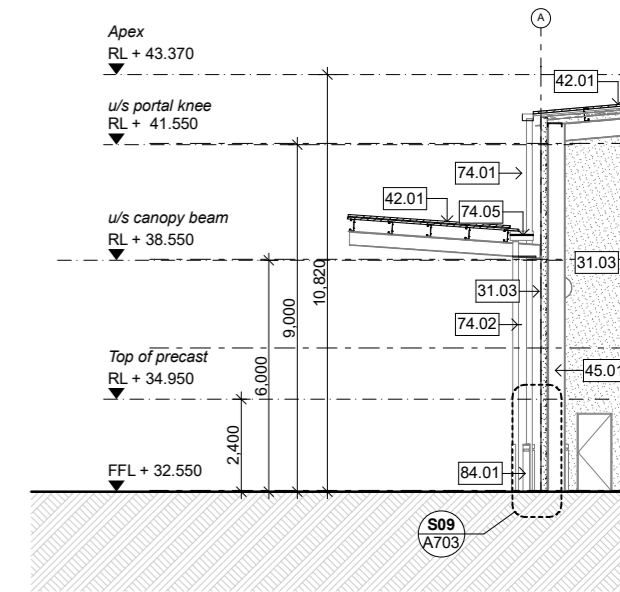
rev	dwg No
E	A300



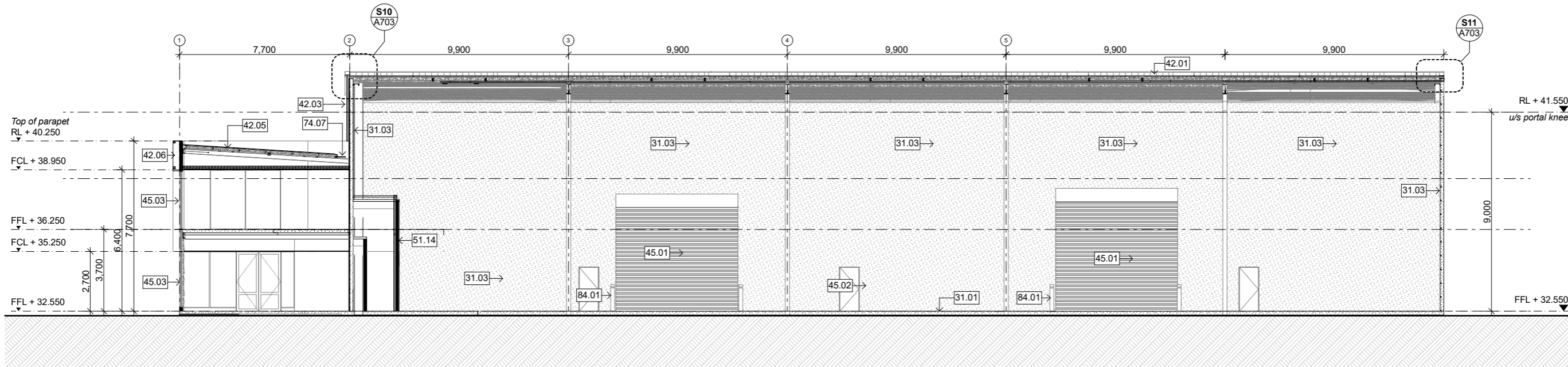
SECTION A-A  
scale 1:100



SECTION C-C  
scale 1:100



SECTION D-D  
scale 1:100



SECTION B-B  
scale 1:100

<b>3 STRUCTURE</b>	0.55mm BMT Colorsteel Endura Dimond Roofing DP955 over building paper over white sicalation and wire netting; Colour: Ironsand	Powdercoated 125mm Front Glazed Firvie Suite aluminium tinted double glazed joinery; Colour to match colorsteel Ironsand	Refer A103 for typical DP & protector layouts
<b>31.01 Concrete Slab</b>	Concrete floor slab on DPC on sand blinding on metal; Refer Engineer's drawings for details.		
<b>31.03 165mm Precast Concrete 240/240/240 FRR Wall Panel (Natural Finish)</b>	165mm thick 240 min Fire rated precast concrete wall panel; Natural finish; Refer Engineer's drawings for details.		
<b>4 ENCLOSURE</b>			
<b>42.01 Warehouse Roof: Profiled Metal Roofing</b>	0.55mm BMT Colorsteel Endura Dimond Roofing DP955 over roof underlay on wire netting on DHS purlins; Colour: Ironsand		<b>74.02 Warehouse Canopy DPs: 100 uPVC Downpipes</b> 100 dia. uPVC downpipes with DP protectors; paint finish; Refer A103 for typical DP & protector layouts
<b>42.03a Warehouse Wall: Profiled Metal Cladding</b>	0.40mm BMT Colorsteel Endura Dimond Cladding LT7 on steel girts; Colour: Ironsand		<b>74.05 Dimond 300 Box External Gutter</b> Colorsteel Endura Dimond 300 Box external gutter with external gutter brackets fixed at 600mm CRS max laid to fall; finish to match gutter
<b>42.05 Office Roof: Profiled Metal Roofing</b>			<b>74.07 Membrane Gutter</b> Nuraply 3PM two layer membrabe system gutter on 17mm CDH3 ply on 45x45mm SG6 H3.2 timber framing @400 crs max laid to fall
<b>42.06 Office Wall: Profiled Metal Cladding</b>	0.55mm BMT Colorsteel Endura Dimond Heritage Tray cladding over building paper over cavibat battens @ 600 crs max over building paper over timber framing; Colour: Ironsand	<b>5 INTERIOR</b>	
<b>45.01 Roller Door</b>	New Metabuilt Warehouse roller door; 5m high. 0.75mm powdercoat frame and door finish; Motorised (3 phase) roller shutter doors, Automatic operation, spring balanced, standard guide to jambs & birdproofing to door head, complete with wind lock guides; Colour to match Colorsteel Ironsand	<b>51.12 16mm Plywood lining</b> 16mm Plywood Lining; Polyurethane finish	
<b>45.02 Exterior Doors</b>	Solid panel security door, powdercoated aluminium faced timber; Refer Door Hardware Schedule for details; Colour to match Colorsteel Ironsand	<b>51.14 16mm Plywood lining on GBTL 60 fire rated system (60/60/60)</b> 16mm Plywood wall lining on 13mm GIB fyreline to each side of the timber framing stopped & sealed (fire rated lining to be installed full height of the wall); plywood lining to have clear polyurethane finish	
<b>45.03 Shopfront glazing</b>		<b>7 SERVICES</b>	
		<b>74.01 Warehouse DPs: 150 uPVC Downpipes</b> 150 dia. uPVC downpipes with DP protectors; paint finish;	
		<b>8 EXTERNAL</b>	
		<b>84.01 Bollards</b> 150mm NB dia. x 1200mm high concrete filled galv steel bollards painted yellow. Fixed to concrete slab at exposed corners of building, roller doors (int & ext) and at services.	

rev	date	details
-----	------	---------

eclipse) architecture  
 24 GUNDRY STREET,  
 NEWTON  
 PO BOX 7539,  
 AUCKLAND 1141  
 p. +64 9 303 4759  
 www.eclipsearchitecture.co.nz

job no.	CPL0471.00
cad file	CPL0642.00 Te Rapa Lot 18_Maifite.rvt
design	
drawn	
checked	
date	26/07/2019
job title	

**TE RAPA GATEWAY  
 WAREHOUSE & OFFICE  
 DEVELOPMENT  
 LOT 18  
 (SPEC BUILDING)  
 HAMILTON INDUSTRIAL  
 PARK**

dwg title  
**Sections: Warehouse**

status  
 DETAILED DESIGN

scale  
 AS SHOWN @ A1

rev	dwg No
<b>E</b>	<b>A301</b>